



THE 27th ANNUAL

Wine Country Classic

AUG. 18-21, 2022

*Brookside Show Park
Elk Grove, CA*



**REGIONAL 1 - USEF, PCHA, NORCAL "B", USEF JUMPER RATING 1 AND SAHJA
RATED**



Featuring

**\$2,000 MDC Stirrup
Jumper Classic**

**\$2,500 MDC Stirrups
Jr/Am Hunter Derby 2'6/2'9"**

**\$2,500 WCC Open
Hunter Derby 3'**

**\$1,000 MDC Stirrups 3' Jr / Am
Jumper Classic**

**\$1,000 MDC Stirrups
Children's/AA
Hunter Classic**



Wine Country Classic

Dear Exhibitors,

Welcome to the Twenty-Seventh Annual Wine Country Classic Horse Show.

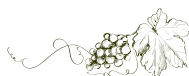
Brookside Equestrian Park is the home of The Wine Country Classic. Hosted by Bill Madden, Brookside has always been known as an exhibitor friendly facility. With enhanced footing, an abundance of trees, tents and seating, Brookside's location is idea for showing in the Sacramento area. It is personally rewarding to produce this once a year event and keep seeing all the familiar faces as well as welcoming the new faces to the experience of the Wine Country Classic.

As always, our purpose has been to produce a "B" rated horse show with the amenities and feel of an "A" rated show. To that end, we have been rewarded by you, the exhibitor, with your increased participation and loyalty. I would like to thank everyone involved in this success: Trainers, exhibitors, parents, sponsors, officials and staff.

Our classes feature the \$2,500 Wine Country Classic Hunter Derby at 3'. We also offer the \$2,500 MDC Stirrups Hunter Derby held at two heights 2'6" and 2'9", the \$2,000 MDC Stirrups Jumper Classic, the \$1,000 MDC Stirrups 3' Jr/Am Jumper Classic and the \$1,000 MDC Stirrups CH/AA Hunter Classic.

A party every evening is our motto and 2022 is no different. Wine, Food, Music and Fun continue due to the sponsorship of Bill Madden and the Wine Country Classic.

The Wine Country Classic is going Green. Entries can be made at www.horseshowtime.com. If you have any questions or need assistance, please contact our show secretary Megan Quinn at mquinn1600@gmail.com or 949-510-6395. Please note that downloads of the entire prize list, index of classes, schedule and entry blank are also available at www.brooksideshowpark.com or at www.mdccorporation.us. The Staff of The Wine Country Classic looks forward to seeing you at Brookside for another fun horse show in the Sacramento Wine Country.





Wine Country Classic

August 18-21, 2022

HORSE SHOW OFFICIALS

JUDGES

The Honorable Marla Amormino – *Los Angeles, CA*
The Honorable Mike Neilsen – *Diamond Bar, CA*
The Honorable Ellen Gates – *San Juan Capistrano, CA*

COURSE DESIGNER

John Manning – *Shelburne Falls, MA*

USEF STEWARD

Alice Calhoun – *CA*

SHOW OFFICIALS

Brian Wallace, Manager – *Sacramento, CA*
Megan Quinn, Show Secretary – *Sacramento, CA*
Josh Early, Starter – *Orange, CA*
Andy Burney, Starter – *Sacramento, CA*
Terrell China, Starter – *Sacramento, CA*
Art Fingerle Jr., Medical First Aid – *Elk Grove, CA*

SHOW VET

David Runk, DVM

SHOW APPROVALS

USEF, PCHA, AND NOR CAL 'B' AND SAHJA RATED

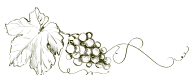
CLASSES OR DIVISIONS ELIGIBLE FOR SAHJA POINTS ARE MARKED WITH A 

For Further Information Call:

Megan Quinn at 949-510-6395

or Brian Wallace 818-912-0720

CLOSE OF ENTRIES / AUGUST 5, 2022



MDC STIRRUPS \$2,500 JR/AM HUNTER DERBY



MDC STIRRUPS \$2,500 OPEN HUNTER DERBY

900. THE MDC STIRRUPS PLACE JR/AM HUNTER DERBY
Shown over a hunter course set at 2'6 and 2'9"

901. THE MDC STIRRUPS OPEN HUNTER DERBY
Shown over a hunter course set at 3'

Entry fee: \$200

Need 12 to fill. Must have competed in two other hunter classes at this show.
Top 8 return for second handy round. High options may be included in course
worth 1 bonus point for each high option jumped.

Horses not to be jogged. Proper Hunter attire required.

Ribbons 1 - 8. Special prize to winner.

Prize money to 6th - 30%, 22%, 16%, 12%, 10%, 10%



SAHJA POINTED CLASSES

**Performance Hunters 3'3/
SAHJA Modified Hunters**
Classes 50 - 53

Adult Am. Hunters 3'
Classes 101 - 104

Children's Hunters
Classes 110 - 113

Low Open Hunters
Classes 20 - 23

Low Child A/A Hunters
2'6"
Class 180 - 183

Children's Pony Hunters
Classes 220 - 223

Walk-Trot - 8 & under
Classes 385 & 386

**Short Stirrup
11 & Under**
Classes 226 - 230

Long Stirrup 12 & Over
Classes 242 - 246

Mini Stirrup
Classes 620 - 624

Pleasure
Classes 362, 363, 364, 368,
370, 371, 375, 376

Equitation - Senior
Classes 334, 350, 351

Kindergarten Jumpers
Classes 422, 423,
432, 433

Low Child Adult Jumpers
Classes 460 - 462

Training Jumpers
Classes 472, 473,
482, 483

Equitation - Junior
Classes 325, 343, 352

HUNTERS

To be judged on performance & soundness. Manners will be emphasized and extreme speed penalized in Junior, Amateur & Pony classes. Classes offering prize money pay 1st - 5th. If less than 3 entered, no prize money will be awarded.

MISCELLANEOUS HUNTERS

Open to horses & ponies

5. Warm-Up	2'9"	\$40
6. Warm-Up	3'0"	\$40
7. Warm-Up	3'3"	\$40
8. Warm-Up	3'6"/3'9"	\$40
9. Warm-Up	2'9"	\$40
10. Warm-Up	2'9"	\$40
11, 12, 13. Warm-Up	2'0"	\$40
14. Warm-up	2'0"/2'3"/2'6"	\$40
100. Warm-Up	3'	\$40
214. Pony Warm-Up	2'3/2'6/2'9	\$40
215. Warm-up	2'0"/2'3"/2'6"	\$40
216. Warm-up	2'6"	\$40
<i>(open only to horses entered in class 900)</i>		
217. Warm-Up	2'9"	\$40
218. Warm-Up	2'0"-2'6"	\$40

USHJA 2'0" HUNTERS

Open to horses and points. No rating.

Not to be jogged.

15, 16, 17. USHJA 2'	2'0"	\$40
18. USHJA 2'	U/S	\$40

USHJA 2'3" HUNTERS

1, 2, 3. USHJA 2'3	2'3"	\$40
4. USHJA 2'3	U/S	\$40

⑤ USHJA 2'6 HUNTERS

Open to horses & ponies.

No rating. Not to be jogged.

20, 21, 22. USHJA 2'6 Hunters	\$40
23. USHJA 2'6 Hunters U/S	\$40

USHJA 2'9" HUNTERS

Open to horses & ponies. No rating. Not to be jogged.

30, 31, 32. USHJA 2'9" Hunters	\$40
33. USHJA 2'9" U/S	\$40

USHJA 3' HUNTERS

Open to horses & ponies. No rating. Not to be jogged.

46, 47, 48. USHJA 3' Hunters	\$40
49. USHJA 3' Hunters U/S	\$40

3'0 GREEN HUNTERS

34, 35. 3' Green Hunters	\$40
36. \$100 3' Green Hunters	\$40
37. 3' Green Hunters U/S	\$40

3'3 GREEN HUNTERS

38, 39. 3'3" Green Hunters	\$40
40. \$100 3'3" Green Hunters	\$40
41. 3'3" Green Hunters U/S	\$40

3'6" GREEN HUNTERS

42, 43. Green Hunters	\$40
44. \$100 Green Hunters	\$40
45. Green Hunters U/S	\$40

3'9" GREEN HUNTERS

70. Green Hunters Over Fences	\$40
71. Green Hunters Over Fences	\$40
72. \$100 Green Hunters Over Fences	\$40
73. Green Hunters 3'9" U/S	\$40

⑤ PERFORMANCE HUNTERS 3'3'/SAHJA MODIFIED HUNTERS

No cross entry restrictions. Division counts for SAHJA Points.

50. 3'3 Perf. Hunters	\$40
51. 3'3 Perf. Hunters	\$40
52. \$100 3'3 Perf. Hunters	\$40
53. 3'3 Perf. Hunters U/S	\$40

PERFORMANCE HUNTERS 3'6

No cross entry restrictions.

60. 3'6 Perf. Hunters	\$40
61. 3'6 Perf. Hunters	\$40
62. \$100 3'6 Perf. Hunters	\$40
63. 3'6 Perf. Hunters U/S	\$40

JR/AM MODIFIED HUNTERS 3'3

No cross entry restrictions. No rating.

Not to be jogged.

80. Jr/Am Hunters	\$40
81. Jr/Am Hunters	\$40
82. \$100 Jr/Am Hunters	\$40
83. Jr/Am Hunters U/S	\$40

JUNIOR HUNTERS 3'3"

84. Jr Hunters 3'3"	\$40
85. Jr Hunters 3'3"	\$40
86. \$100 Jr Hunters 3'3"	\$40
87. Jr Hunters 3'3" U/S	\$40

JUNIOR HUNTERS 3'6"

88. Jr Hunters 3'6"	\$40
89. Jr Hunters 3'6"	\$40
90. \$100 Jr Hunters 3'6"	\$40
91. Jr Hunters 3'6" U/S	\$40



A/O HUNTERS 3'3"

92. AO Hunters 3'3"	\$40
93. AO Hunters 3'3"	\$40
94. \$100 AO Hunters 3'3"	\$40
95. AO Hunters 3'3" U/S	\$40

A/O HUNTERS 3'6"

96. AO Hunters 3'6"	\$40
97. AO Hunters 3'6"	\$40
98. \$100 AO Hunters 3'6"	\$40
99. AO Hunters 3'6" U/S	\$40

⑤ ADULT AMATEUR HUNTERS 3'

18 & Over Open to horses & ponies ridden by an adult. Horses or riders may not cross enter into any Amateur/Owner class at this show or classes with fences 3'6" or higher that offers prize money except Am/Adult jumpers. No Jog.

101. Adult Amateur Hunter	\$40
102. Adult Amateur Hunter	\$40
103. \$100 Adult Amateur Hunter	\$40
104. A/A Hunters U/S	\$40

⑤ CHILDREN'S HUNTERS 3'

17 & Under Open to horses & ponies ridden by a Jr. Exhibitor. Horses & riders may not cross enter into the Jr. Hunter division. Riders may not show in any class with fences 3'6" or higher except equitation, medals & Ch/Adult jumpers. Horses may be ridden by another in Amateur or open classes with fences 3'6" or higher. Fences 3'. Not to be jogged.

110. Children's Hunter	\$40
111. Children's Hunter	\$40
112. \$100 Children's Hunter	\$40
113. Children's Hunter U/S	\$40

⑤ MODIFIED CH/AD HUNTERS 2'9"

Open to horses & ponies.
No rating. Not to be jogged.

180. Modified Ch/Ad Hunters	\$40
181. Modified Ch/Ad Hunters	\$40
182. Modified Ch/Ad Hunters	\$40
183. Modified Ch/Ad Hunters U/S	\$40

JR/AM HANDY HUNTERS 2'6"

Open to horses & ponies.
No rating. Not to be jogged.

190. Jr/Am Handy	\$40
191. Jr/Am Handy	\$40
192. Jr/Am Handy	\$40
193. Jr/Am Handy U/S	\$40

LOW CHILD/AA HUNTERS 2'6"

Open to horses & ponies.
No rating. Not to be jogged.

200. Low Child/AA Hunters	\$40
201. Low Child/AA Hunters	\$40
202. Low Child/AA Hunters	\$40
203. Low Child/AA Hunters	\$40
204. Low Child/AA Hunters U/S	\$40
205. Low Child/AA Hunters Warm-Up	\$40
206. Low Child/AA Hunters Warm-Up	\$40

PONY HUNTERS

All ponies are required to possess a current USEF Measurement card or valid measurement form issued by the USEF. It must be shown at the show office before numbers are released.

RIDERS: Small-12 & under, Medium-14 & u, Large-17 & u. **FENCE HEIGHTS:** Small (Not to exceed 12.2) 2'3", Medium (Over 12.2 Not to exceed 13.2) 2'6", Large (Over 13.2 Not to exceed 14.2) 2'9". Division will be split if entries warrant.

210. Pony Hunter 25% Conf.	\$40
211. Pony Hunter	\$40
212. Pony \$100 Stake	\$40
213. Pony Hunter U/S	\$40

⑤ CHILDREN'S PONY HUNTER S/M 2', L 2'6"

No cross entry restrictions.
Nor Cal Rated. Not to be jogged.

220. Children's Pony Hunter	\$40
221. Children's Pony Hunter	\$40
222. Children's Pony Hunter	\$40
223. Children's Pony Hunter U/S	\$40

250. \$1,000 MDC Stirrups Ch/AA 3' Hunter Classic

To be eligible, horse must have shown in at least two other over-fence classes in the same division.

2 Round Classic with class 103 (Adults) and 112 (Children's) to count as round 1.

At least 6 entries needed to fill.
Entry \$75 Prize money paid
to 5th - 30%, 25%, 20%, 15%, 10%



OPPORTUNITY CLASSES

Riders in classes 380 through 386 may not cross enter into any class that requires cantering.

381. Walk/Trot Equitation	\$30	⑤ 385. Walk/Trot 8 & U Eq.	\$30
382. Walk/Trot Equitation	\$30	⑤ 386. Walk/Trot 8 & U Pleasure	\$30
383. Walk/Trot Pleasure	\$30	380. Lead Line 10 & Under	\$20
384. Walk/Trot Pleasure	\$30		

SHORT STIRRUP 2' - 11 & Under

Riders may not cross enter into any rated over-fence class. Not be jogged. No rating.

224. SS Hunters	\$40
225. SS Hunters	\$40
⑤ 226. SS Hunters	\$40
⑤ 227. SS Hunters	\$40
⑤ 228. SS Hunters U/S	\$40
⑤ 229. SS Flat Equitation	\$40
⑤ 230. SS Equitation/Fences	\$40

LONG STIRRUP 2' - 12 & Over

Riders may not cross enter into any rated over-fence class. Not be jogged. No rating.

240. LS Hunters	\$40
241. LS Hunters	\$40
⑤ 242. LS Hunters	\$40
⑤ 243. LS Hunters	\$40
⑤ 244. LS Hunters U/S	\$40
⑤ 245. LS Flat Equitation	\$40
⑤ 246. LS Equitation/Fences	\$40

MINI STIRRUP - CHILD/ADULT

Open to children and adult amateur riders who have never shown over fences 2'0" or higher. To be shown over a cross rail course of fences 18 in height. Trotting is allowed.

⑤ 620. Mini Stirrup Hunters	\$40
⑤ 621. Mini Stirrup Hunters	\$40
⑤ 622. Mini Stirrup Hunters U/S	\$40
⑤ 623. Mini Stirrup Flat Equitation	\$40
⑤ 624. Mini Stirrup Equitation/Fences	\$40

PLEASURE CLASSES

UNRATED PLEASURE

374. Pleasure Pairs <i>(open to horses and ponies)</i>	\$40/Pair
--	-----------

ENGLISH PLEASURE HUNTER SEAT - USEF Rated

⑤ 362. Open	\$30	⑤ 368. Geldings	\$30
⑤ 363. 18/over	\$30	⑤ 370. Mares	\$30
⑤ 364. 17/under	\$30	⑤ 371. Ladies to Ride	\$30
365. Maiden	\$30	⑤ 375. Gentleman to Ride	\$30
366. Novice	\$30	⑤ 376. Championship	\$30
367. Limit	\$30		



HUNT SEAT EQUITATION

To be judged on hands, seat & general horsemanship. MAIDEN/NOVICE/LIMIT: Not to have won 1/3/6 blue ribbons at a recognized show.

HUNT SEAT EQUITATION - FLAT

320. Pony 17 & Under	\$40
321. Pony 17 & Under Champ	\$40
⑤ 325. Junior 17 & Under	\$40
326. Maiden 17 & Under	\$40
327. Maiden 18 & Over	\$40
328. Maiden Champ. Jr/Am	\$40
329. Novice 17 & Under	\$40
330. Novice 18 & Over	\$40
331. Novice Champ. Jr/Am	\$40
332. Limit 17 & Under	\$40
333. Limit 18 & Over	\$40
⑤ 334. A/A Equitation 18 & O	\$40
354. Childs Pony 17 & U	\$40

HUNT SEAT EQUITATION - FENCES

340. Childs Pony 17 & U 2' - 2'6	\$40
341 342. Pony 17 & U 2'3/2'6/2'9	\$40
⑤ 343. Junior 17 & Under 3'	\$40
345. Maiden 17 & Under 2'6	\$40
346. Novice 17 & Under 2'9	\$40
347. Novice 18 & Over 2'9	\$40
348. Limit 17 & Under 2'9	\$40
349. Limit 18 & Over A/A 2'9	\$40
⑤ 350. A/A Equitation 18 & O 3'	\$40
⑤ 351. A/A Equitation 18 & Over 3'	\$40
⑤ 352. Jr Equitation 17 & Under 3	\$40
353. Maiden 18 & Over 2'6	\$40

Please note that downloads of the
entire prize list, index of classes,
schedule and entry blank are
available at
WWW.MDCCORPORATION.US.

The Staff of The Wine Country
Classic looks forward to seeing you
at Brookside for another fun horse
show in the Wine Country.



MEDAL CLASSES

USEF, PCHA, NORCAL & SAHJA medals, please see specifications in their respective rulebooks. Must be a member to compete.

290. JRW Jr/Am 3'3" \$40
To be shown over a course of Hunter/Jumper type fences approx. 3'3", with flat work incorporated into the course. NO work-off is required, but further testing is at the judge's discretion. Points awarded to the top 8 riders (8-7-6-5-4-3-2-1) points will be doubled in classes with 15 or more. Six points required to qualify a rider for Finals. Five riders must complete the course.

291. NorCal Junior 3'6" \$40
Open to current junior members of NorCal Hunter/Jumper Association. Trainers of contestants must also be current NorCal members. A stallion may not be ridden by a junior. To be shown over a course of not less than eight fences 3'6" in height. Either hunter or jumper type fences may be used. The course must include at least two changes of direction, and a combination containing an oxer. No triple combinations, water jumps or liverpools are allowed. Two or more tests of the top 4 riders will be required (Tests 1-19). Any exhibitor failing to return for the work-off will automatically be placed last of those called back. If fewer than 5 riders complete the course, no medal will be awarded. Three riders must complete the course in order to fill the class. If fewer than 3 riders complete the course, no points will be awarded. Management may combine the NorCal Junior and NorCal Senior Medal Classes in the event that one or the other, or both, do not fill.

292. NorCal Senior 3'6" \$40
Open to current amateur senior NorCal members. Trainers of contestants must also be current NorCal members. To be shown over a course of not less than eight fences 3'6" in height. Either hunter or jumper type fences may be used. The course must include at least two changes of direction, and a combination containing an oxer. No triple combinations, water jumps or liverpools are allowed. Two or more tests of the top 4 riders will be required (Tests 1-19). Any exhibitor failing to return for the work-off will automatically be placed last of those called back. If fewer than 5 riders complete the course, no medal will be awarded. Three riders must complete the course in order to fill the class. Management may combine the NorCal Junior and NorCal Senior Medal Classes in the event that one or the other, or both, do not fill.

293. NorCal Pony 2'3/2'6/2'9" \$40
Open to current junior members of NorCal Hunter/Jumper Association. Trainers of contestants must also be members of NorCal. Riders in this class may NOT enter a NorCal Junior Medal at the same show. Suitability of pony to rider will be emphasized - stallions are not permitted. One rider per pony. Hunter-type fences will be used and fence heights will be according to USEF specifications for small, medium, and large ponies. The course, of not less than six hunter-type fences with at least one change of direction, is to incorporate at least two tests (USEF 1-9). No work-off is required. Two riders must complete the course in order to fill the class. If fewer than 2 riders complete the course, no points will be awarded. If fewer than 5 riders complete the course, no medal will be awarded.

294. NorCal 3' 3' \$40
Open to junior and amateur members of NorCal who have not shown in any classes higher than 3'3" in the qualifying year. Trainers of contestants must also be NorCal members. A stallion may not be ridden by a junior. The class may be held in either the hunter ring or the jumper ring. The course will consist of approximately 8 fences 3-ft in height, with a minimum of two changes of direction. A work-off of at least the top 4 contestants is mandatory. Three riders must complete the course in order to fill the class. If fewer than 3 riders complete the course, no points will be awarded. If fewer than 5 riders complete the course, no medal will be awarded.

295. Almaden Farms Jr/Am Medal 2'9" \$40
Open to Junior and Amateur riders. The class may be held over hunter or jumper type fences at 2'9" in height. Three riders must enter for the class to count. Any rider showing in classes with fences over 3'3" in height at the same show may not show in this medal. The course must include, two changes of direction and two tests built into the course, ie: trot, halt, back, etc. Additional testing is at the judges discretion. First and second place qualify for the finals.

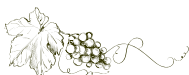
296. WCC Jr/Am Medal 3'0" \$40
To be shown over a minimum of 8 fences 3'3" with 2 changes of direction and one combination which must include an oxer.. 2 or more tests will be incorporated in the original course, and no work-off is required. At least 4 riders must finish

297. Cloverleaf Medal 3'0" \$40
Class is open to Junior & Amateur riders not showing in any classes over 3'6" in height. To be judged over a Jumper course of not less than 9 fences at 3 feet in height. To be judged on hands, seat, guidance & control of the horse on a Jumper type of ride. There will not be a time allowed; a tone will be used to signal the rider to start the course. Any Jumper type bit or equipment is allowed. Jumping penalties will be considered in accordance with USEF Equitation rules. Additional work-offs after the initial round will be at the Judge's discretion, and any number of riders may be asked to test. At least 3 riders must enter & show in the class.

298. Horse & Hound Jr/Am Medal 3' \$40

Open to all junior and amateur riders who have not competed in a 3'6" medal finals in the previous 3 years and who are not showing 3'6" or higher at this show. To be shown over a hunter or jumper course of 3' fences with 2 tests included. 5 riders fill. Points awarded 7-5-4-3-2-1. If only 4 finish, points will be awarded 5-3-2-1 and if 3 finish, the points will be 4-2-1. 5 points qualifies for the finals in Oct. Classes with 15 or more entries will be pointed 10-8-7-6-5-4-3-2.

299. Horse & Hound Pony Medal 2'2'6" \$40
Minimum 6 fences, Two USEF tests 1-9 in course, No Work off.



316. PCHA Jr./Am 2'9"

To be held over a course of at least eight fences not to exceed 2'9" with 2 tests from the USEF rule book (tests 1-9) included in the course. Three competitors must complete the course to fill the class.

300. PCHA Jr. 14 & Under 3'3 \$40

This class is designed as an intermediate equitation class for riders 14 years of age and under who are current PCHA members. 8 fence minimum, 1 combo required, 2 tests included. Further testing at judge's discretion. See further specs in PCHA rule book.

PCHA Adult Horsemanship 18-34 The class is to be held over a class of at least 8 fences which are not to exceed 3'3" in height. One combination and at least 2 changes of direction must be included in the course. Two or more tests USEF 1-18 will be part of the original course.

301. PCHA Adult 35 & Over 3'3 \$40

This class is open to riders 35 years of age and over (horse show age) who are current PCHA members. 8 fence minimum, 1 combo required, 2 tests included. Further testing at judge's discretion. See further specs in PCHA rule book.

302. Onondarka 12 & Under 3' \$40

For riders 12 years of age and under, current members of the PCHA, who will not be older than 12 (USEF horse show age) when Final is held. Three (3) contestants must complete the course in order for points to count. Top 4 riders work off. See further specs in PCHA rule book.

303. Foxfield 18 & Over 3'3 \$40

Open to amateur members of PCHA. 2 or more tests of the top 3 or 4 required. 3 riders to fill. See specs in PCHA rule book.

305. Pickwick Jr./Am 3'3 \$ 40

To be shown over a jumper course of not less than 8 fences 3'3" in height. To be judged on hands, seat, guidance & control of the horse. Jumper type horses are encouraged & jumper equip. is allowed. Jumping penalties are to be considered in accordance with USEF hunter seat equitation rules. There will be no work-off. A time allowed of 360yppm will be used. One point deducted from score for each second over posted time allowed. At least 4 riders required for the class to count.

306. Marshall & Sterling/USEF Pony Medal 2'3/2'6/2'9" \$40

Open to junior members of USEF who have not reached 18th birthday on ponies 14.2 hands under. Riders in this class cannot cross enter the USEF Jr. Medal at same show. Two tests included in the course. For class to count six riders must complete the course. Only 1 rider per pony.

307. Dover Saddlery/USEF Hunter Seat Medal 3'6" 3'6 \$40

Open to junior members of USEF. Fences 3'6". Minimum of 8 fences. Course must include a combo, and at least 3 of the following: Bending line, narrow jump, roll-back turn, fence at the end of the ring, long approach to a single jump. Two or more tests of top 4 required. For class to count, 3 riders must complete the course. See specs in USEF rule book.

308. USEF Adult Equitation 3'3 \$40

Open to Amateur Members of the USEF. To be shown over a course of not less than eight obstacles at 3'3". Two or more tests of the top four competitors are required. To fill a class six competitors must complete the course. Only one rider per horse. See specs in USEF rule book.

309. Art Gottfried Medal 2'9 \$ 40

Open to Jr. and Am. riders 85 & under not showing in medal classes of 3'6 or higher. Individual testing optional at the Judge's discretion.

310. SAHJA Pony Medal 2'3 \$40

Open to Junior riders showing ponies (14.2 hands and under). To be judged over a course of fences ranging from 2'0 to 2'6" in height, with two USEF tests (1-9) incorporated in the course. There is no work-off. Open scoring must be used. Points awarded based on number of riders in the class. Five points to qualify for finals.

311. SAHJA Mini Medal 2'6 \$40

Open to any Junior or Amateur rider who has not won a rated 3'6" medal class or any medal finals, except the SAHJA Pony Medal. Riders to be judged over a course of fences 2'6" in height, with at least two USEF tests (1-19) incorporated into the course. There is no work-off. Open scoring must be used. Points awarded based on number of riders in the class. Five points to qualify for finals.

312. SAHJA Child/Adult Medal 3' \$40

Open to any Junior or Amateur rider. Riders to be judged over a course of fences 3'0" in height. At least the top four will return for a flat work-off. Open scoring must be used. Points awarded based on number of riders in the class. Five points to qualify for finals.

313. CPHA Junior Hunter Seat Medal Class - 17 And Under:

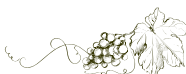
Open to junior riders, seventeen (17) years of age and under, who are current registered members of the California Professional Horsemen's Association and the PCHA. (Trainers of riders in this class must be professional members of the CPHA and PCHA.) To be shown over either a hunter or jumper equitation type course of fences 3'6" in height with at least two (2) changes of direction and at least (1) combination with a spread fence. A minimum of three (3) riders will be required to work off using (USEF Eq. Tests 1-18).

314. CPHA Amateur Hunter Seat Medal Class - 18 & Over

Open to amateur riders, eighteen (18) years of age and over, who are current registered members of the California Professional Horsemen's Association and the PCHA. (Trainers of riders in this class must be professional members of the CPHA and PCHA.) Same specs as the CPHA Junior Hunt Seat Medal Class 17 and under.

315. CPHA Foundation Equitation

Open to Junior and Amateur riders who are current members of the CPHA and PCHA, to be judged over an equitation type course of at least 8 fences 3'3" in height with at least 2 USEF Tests (1, 2,6,10,12,15,17 or 18) included as part of the course. Trainers of riders in this class must be professional members of the CPHA and current members of the PCHA. This class will be judged on the current standards of the US Equestrian Federation.



JUMPERS

Ties involving 1st place will jump off. All others will be decided by time taken in the 1st round. Jump orders will be drawn & posted per USEF rules. In all classes fence heights and widths are approximate. Tables may be changed at management's discretion. Divisions labeled with (S) are eligible for SAHJA points

FUN JUMPERS

700/712.	Table 2.2,1	.70	\$40
701/713.	Table 2.2,1	.75	\$40
702/714.	Table 2.2,1	.80	\$40
703/715.	Table 2.2,1	.85	\$40
704/716.	Table 2.2,1	.90	\$40
705/717.	Table 2.2,1	.95	\$40
706.	Table 2.2,1	1.00	\$40
707/718.	Table 2.2,1	1.05	\$40
708.	Table 2.2,1	1.10	\$40
709/719.	Table 2.2,1	1.15	\$40
710.	Table 2.2,1	1.20	\$40
711.	Table 2.2,1	1.25	\$40

2'3" LOW JUMPERS

400.	Table 2.2b	\$40
401.	Table 2.2c	\$40
402.	\$100 Table 2.2,1	\$40
403.	Table 2.2c	\$40

.75M JUMPERS

404.	Table 2.2b	\$40
405.	Table 2.2c	\$40
406.	\$100 Table 2.2,1	\$40
407.	Table 2.2c	\$40

.80 JUMPERS

410.	Table 2.2b	\$40
411.	Table 2.2c	\$40
412.	\$100 Table 2.2,1	\$40
413.	Table 2.2c	\$40

.85M JUMPERS

420.	Table 2.2b	\$40
421.	Table 2.2c	\$40
(S) 422.	\$100 Table 2.2,1	\$40
(S) 423.	Table 2.2c	\$40

.90M JUMPERS

430.	Table 2.2b	\$40
431.	Table 2.2c	\$40
(S) 432.	\$100 Table 2.2,1	\$40
(S) 433.	Table 2.2c	\$40

.95M JUMPERS

440.	Table 2.2b	\$40
441.	Table 2.2c	\$40
442.	\$100 Table 2.2,1	\$40
443.	Table 2.2c	\$40

\$1,000 MDC STIRRUPS 3' JR / AM JUMPER CLASSIC

521. 2.2a/b \$75

Fences 3' - .95m. All horses or ponies must have been entered in two other jumper classes at 3'3" or lower. Horse or Rider may not cross enter in any classes 3'6" or higher. 6 to fill.

Jumper equipment may be used.

HUNTER ATTIRE REQUIRED.

1.00M JUMPERS

450.	Table 2.2b	\$40
451.	Table 2.2c	\$40
452.	\$100 Table 2.2,1	\$40
453.	Table 2.2c	\$40

1.00M LOW

CHILD/ADULT JUMPERS

(S) 460.	Table 2.2c	\$40
(S) 461.	Table 2.2,1	\$40
(S) 462.	\$100 Table 2.2c	\$40

1.05M JUMPERS

470.	Table 2.2b	\$40
471.	Table 2.2c	\$40
(S) 472.	\$100 Table 2.2,1	\$40
(S) 473.	Table 2.2c	\$40

1.10M JUMPERS

480.	Table 2.2b	\$40
481.	Table 2.2c	\$40
(S) 482.	\$100 Table 2.2,1	\$40
(S) 483.	Table 2.2c	\$40

1.10M CHILDREN'S JUMPERS

Open to riders 17 & under. Horses or Riders may not cross enter into any Jr Jumper class at this show.

In addition, riders may not cross enter into any jumper class at this show that offers prize money, except in one (1) special class or classic.

490.	Table 2.2b	\$40
491.	Table 2.2c	\$40
492.	\$100 Table 2.2,1	\$40
493.	Table 2.2c	\$40

1.10M ADULT AMATEUR JUMPERS

Open to amateur riders 18 & over. Horses or Riders may not cross enter into any Amateur Jumper class at this show. In addition, riders may not cross enter into any jumper class at this show that offers prize money, except in one (1) special class or classic.

550.	Table 2.2b	\$40
551.	Table 2.2c	\$40
552.	\$100 Table 2.2,1	\$40
553.	Table 2.2c	\$40

1.15M JUMPERS

500.	Table 2.2b	\$40
501.	Table 2.2c	\$40
502.	\$100 Table 2.2,1	\$40
503.	Table 2.2c	\$40

1.20M JUMPERS

554.	Table 2.2b	\$40
555.	Table 2.2c	\$40
556.	\$100 Table 2.1	\$40
557.	Table 2.2c	\$40

1.20M MODIFIED JR/AM JUMPERS

510.	Table 2.2c	\$40
512.	Table 2.1	\$40
513.	\$100 Table 2.2c	\$40

1.25M JUMPERS

560.	Table 2.2b	\$40
561.	Table 2.2c	\$40
562.	\$100 Table 2.2,1	\$40
563.	Table 2.2c	\$40

1.25M JR/AM JUMPERS

570.	Table 2.2c	\$40
571.	Table 2.2.1	\$40
572.	\$100 Table 2.2c	\$40

"JUST FOR FUN JUMPERS"

Table 2.1, Speed once around.

530.	Jr/Am	2'	\$40
531.	Jr/Am	2'6"	\$40
532.	Jr Pony	2'3"	\$40
533.	Jr/Am	2'	\$40
534.	Jr/Am	2'6"	\$40
535.	Jr Pony	2'3"	\$40
536.	Jr/Am	2'	\$40
537.	Jr Pony	2'3"	\$40
538.	Jr/Am	2'6"	\$40
539.	Jr/Am	2'	\$40
540.	Jr/Am	2'6"	\$40
541.	Jr Pony	2'3"	\$40



\$2,000 MDC STIRRUPS JUMPER CLASSIC



Class 520. \$175 entry fee. 1.10m Table 2.2a

At least 8 entries needed to fill. Horse must be entered in at least 2 other classes at this show.

Pays 1st-5th . If less than 8, horses may ride for ribbons and an entry fee of \$50.

Prize money to 5th - 1st 30%; 2nd 25%; 3rd 20%, 4th 15%; 5th 10%



A complimentary wine glass will be given to each entry.

Additional wine glasses may be purchased and
reserved on the Entry Blank for \$3 a piece.

WINE COUNTRY CLASSIC - TENTATIVE SCHEDULE

THURSDAY	FRIDAY	SATURDAY	SUNDAY
JUMPER RING - 8:00AM ALL CLASSES TABLE 2.2B UNLESS OTHERWISE NOTED 400. Low Jumpers 2'3" 700. .70 Fun Jumpers 2.2,1 2'3" 404. .75m Jumpers 2'5" 701. .75 Fun Jumpers 2.2,1 2'5" 410. .80m Jumpers 2'7" 702. .80m Fun Jumpers 2.2,1 2'7" 420. .85m Jumpers 2'9" 703. .85m Fun Jumpers 2.2,1 2'9" 430. .90m Jumpers 2'11" 704. .90m Fun Jumpers 2.2,1 2'11" 440. .95m Jumpers 3'1" 705. .95m Fun Jumpers 2.2,1 3'1" 450. 1.00m Jumpers 3'3" 706. 1.00m Fun Jumpers 2.2,1 3'3" 460. 1.05m Jumpers 3'5" 707. 1.05m Fun Jumpers 2.2,1 3'5" 480. 1.10m Jumpers 3'7" 708. 1.10m Fun Jumpers 2.2,1 3'7" 500. 1.15m Jumpers 3'9" 709. 1.15m Fun Jumpers 2.2,1 3'9" 554. 1.20m Jumpers 3'11" 710. 1.20m Fun Jumpers 2.2,1 3'11" 560. 1.25m Jumpers 4'1" 711. 1.25m Fun Jumpers 2.2,1 4'1"	JUMPER RING - 8:00AM ALL CLASSES 2.2C UNLESS OTHERWISE NOTED 401. Low Jumpers 2'3" 712. .70m Fun Jumpers 2.2,1 2'3" 405. .75m Jumpers 2'5" 713. .75m Fun Jumpers 2.2,1 2'5" 411. .80m Jumpers 2'7" 714. .80m Fun Jumpers 2.2,1 2'7" 421. .85m Jumpers 2'9" 715. .85m Fun Jumpers 2.2,1 2'9" 431. .90m Jumpers 2'11" 716. .90m Fun Jumpers 2.2,1 2'11" 441. .95m Jumpers 3'1" 717. .95m Fun Jumpers 2.2,1 3'1" 305. Pickwick Jr/Am Medal 3'3" 451. 1.00m Jumpers 3'3" 460. Low Child/Adult Jumpers 3'5" 471. 1.05m Jumpers 3'5" 718. 1.05m Fun Jumpers 2.2,1 3'5" 481. 1.10m Jumpers 3'7" 490. Childrens Jumpers 3'7" 550. Adult Amateur Jumpers 3'7" 501. 1.15m Jumpers 3'9" 719. 1.15m Fun Jumpers 2.2,1 3'9" 555. 1.20m Jumpers 3'11" 510. Jr/AmModifiedJumpers 3'11" 561. 1.25m Jumpers 4'1" 570. Jr/Amateur Jumpers 4'1"	JUMPER RING - 8:00AM ALL CLASSES 2.2,1 UNLESS OTHERWISE NOTED 402. \$100 Low Jumpers 2'3" 406. \$100.75m Jumpers 2'5" 412. \$100.80m Jumpers 2'7" 422. \$100.85m Jumpers 2'9" 432. \$100.90m Jumpers 2'11" 297. Cloverleaf Equitation 3'0" 442. \$100.95m Jumpers 3'1" 452. \$100 1.00m Jumpers 3'3" 461. Low Child/Adult Jumpers 3'3" 472. \$100 1.05m Jumpers 3'5" 482. \$100 1.10m Jumpers 3'7" 491. Children's Jumpers 3'7" 492. \$100 Children's Jumpers 3'7" 551. A/A Jumpers 3'7" 552. \$100 Adult/Amateur Jumpers 3'7" 502. \$100 1.15m Jumpers 3'9" 556. \$100 1.20m Jumpers 3'11" 512. Jr/Am Modified Jumpers 3'11" 562. \$100 1.25m Jumpers 4'1" 571. Jr/Amateur Jumpers 4'1"	JUMPER RING - 8:00AM ALL CLASSES 2.2C UNLESS OTHERWISE NOTED 380. Leadline 374. Pleasure Pairs 520. \$2,000 MDC Stirrups Jumper Classic Table 2.2a, 1.10m 403. Low Jumpers 2'3" 407. .75m Jumpers 2'5" 413. .80m Jumpers 2'7" 423. .85m Jumpers 2'9" 433. .90m Jumpers 2'11" 443. .95m Jumpers 3'11" 521. \$1,000 MDC Stirrups Children's/AA Jumper Classic 3'1" 453. 1.00m Jumpers 3'3" 462. \$100 Low Child/AA Jumpers 3'3" 473. 1.05m Jumpers 3'5" 483. 1.10m Jumpers 3'7" 493. Children's Jumpers 3'7" 553. Adult Amateur Jumpers 3'7" 503. 1.15m Jumpers 3'9" 557. 1.20m Jumpers 3'11" 513. \$100 Jr/Am Mod. Jumpers 3'11" 563. 1.25m Jumpers 4'1" 572. \$100 Jr/Amateur Jumers 4'1"
HUNTER RING 1 - 8:00AM 5. Warm-Up Hunters 2'9" 30. USHJA 2'9" Hunters 2'9" 31. USHJA 2'9" Hunters 2'9" 6. Warm-Up Hunters 3'0" 34. Green Hunters 3'0" 35. Green Hunters 3'0" 46. USHJA 3'0" Hunters 3'0" 47. USHJA 3'0" Hunters 3'0" 7. Warm-Up Hunters 3'3" 38. Green Hunters 3'3" 39. Green Hunters 3'3" 50. Performance Hunters (SAHJA Modified) 3'3" 51. Performance Hunters (SAHJA Modified) 3'3" 8. Warm Up Hunters 3'6"/3'9" 60. Performance Hunters 3'6" 61. Performance Hunters 3'6" 42. Green Hunters 3'6" 43. Green Hunters 3'6" 70. Green Hunters Over Fences 3'9" 71. Green Hunters Over Fences 3'9"	HUNTER RING 1 - 8:00AM 217. Warm-Up Hunters 2'9" 32. USHJA 2'9" Hunters 2'9" 33. USHJA 2'9" Hunters U/S 36. 3'0" Green Hunters U/S 49. USHJA 3'0" Hunters U/S 37. 3'0" Green Hunters 3'0" 48. USHJA 3'0" Hunters 3'0" 40. 3'3" Green Hunters U/S 53. Perf. Hunters (SAHJA Modified) U/S 41. 3'3" Green Hunters 3'3" 52. \$100 Perf. Hunters (SAHJA Modified) 3'3" 63. Perf. Hunters (3'6") U/S 45. 3'6" Green Hunters U/S 44. \$100 Green Hunters 3'6" 62. \$100 Performance Hunters 3'6" 73. 3'9" Green Hunters U/S 72. Green Hunters Over Fences 3'9" 100. 3' Warm-up 3'0" 110. Children's Hunters 3'0" 101. A/A Hunters 3'0" 343. Eq Over Fences 17& U 3'0" 350. Eq Over Fences 18&O 3'0" 80. Jr/Am Modified Hunters 3'3" 81. Jr/Am Modified Hunters 3'3" 84, 85. Jr Hunters 3'3" 92, 93. AO Hunters 3'3" 88, 89. Jr Hunters 3'6" 96, 97. AO Hunters 3'6" 307. USEF Jr. Hunt Seat Medal 17&U 3'6" 901. \$2,500 MDC Stirrups Open Hunter Derby 3'0	HUNTER RING 1 - 8:00AM 9. Warm-Up Hunters 2'9" 180. Modified Child/Adult Hunters 2'9" 348. Limit Equitation 17&U 2'9" 349. Limit Equitation 18&O 2'9" 309. Art Gottfried Medal 2'9" 325. Jr. Equitation 17&U Flat 334. Amateur Equitation 18&O Flat 111. Children's Hunters 3'0" 102. A/A Hunters 3'0" 312. SAHJA Child/Adult Medal 3'0" 302. Onondarka Medal 3'0" 296. WCC Jr/Am Medal 3'0" 82. \$100 Jr/Am Modified Hunters 3'3" 83. Jr/Am Modified Hunters U/S 308. USEF Adult Equitation 3'3" 86. \$100 Jr Hunters 3'3" 94. \$100 AO Hunters 3'3" 90. \$100 Jr Hunters 3'6" 98. \$100 AO Hunters 3'6" 87. Jr Hunters 3'3" U/S 91. Jr Hunters 3'6" U/S 95. AO Hunters 3'3" U/S 99. AO Hunters 3'6" U/S 291. NorCal Junior Medal 3'6" 292. NorCal Senior Medal 3'6" 313. CPHA Junior Medal 3'6" 314. CPHA Senior Medal 3'6" 900. \$2,500 MDC Stirrups Jr/Am Hunter Derby 2'6"/2'9"	HUNTER RING 1 - 8:00AM 10. Warm-Up Hunters 2'9" 181. Modified Child/Adult Hunters 2'9" 182. Modified Child/Adult Hunters 2'9" 183. Modified Child/Adult Hunters U/S 295. Almaden Jr/Am Medal 2'9" 316. PCHA Jr/Am 2'9" 346. Novice Equitation 17&U 2'9" 347. Novice Equitation 18&O 2'9" 113. Children's Hunters U/S 104. A/A Hunters U/S 352. Jr. Equitation 17&U 3'0" 351. Amateur Equitation 18&O 3'0" 112. \$100 Children's Hunters 3'0" 103. \$100 A/A Hunters 3'0" 250. \$1,000 MDC Stirrups Children's/AA Hunter Classic 3'0" 298. Horse & Hound Jr/Am Medal 3'0" 294. NorCal Jr/Am Medal 3'0" 290. JRW Jr/Am Medal 3'3" 300. PCHA Horsemanship 14&U 3'3" 317. PCHA Adult Horsemanship 18-34 301. PCHA Horsemanship 35&O 3'3" 315. CPHA Foundation Medal 3'3" 303. Foxfield Medal 3'3"
HUNTER RING 2 - 8:00AM 14. Warm Up Hunters 2'0"/2'3"/2'6" 15. USHJA 2'0" Hunters 2'0" 16. USHJA 2'0" Hunters 2'0" 18. USHJA 2'0" Hunters U/S 1. USHJA 2'3" Hunters 2'3" 2. USHJA 2'3" Hunters 2'3" 4. USHJA 2'3" Hunters U/S 20. USHJA 2'6" Hunters 2'6" 21. USHJA 2'6" Hunters 2'6" 23. USHJA 2'6" Hunters U/S 530. Just for Fun Jumpers 2'0" 532. Just for Fun Pony 2'3" 531. Just for Fun JR/AM Jumpers 2'6"	HUNTER RING 2 - 8:00AM 218. Warm Up Hunters 2'0"-2'6" 17. USHJA 2'0" Hunters 2'0" 3. USHJA 2'3" Hunters 2'3" 22. USHJA 2'6" Hunters 2'6" 326. Maiden Equitation 17&U Flat 327. Maiden Equitation 18&O Flat 329. Novice Equitation 17&U Flat 330. Novice Equitation 18&O Flat 11. Warm-Up Hunters 2'0" 224. Short-Stirrup Hunters 2'0" 225. Short-Stirrup Hunters 2'0" 240. Long-Stirrup Hunters 2'0" 241. Long Stirrup Hunters 2'0" 533. Just for Fun Jumpers 2'0" 214. Pony Warm-Up 2'0"/2'6" 220. Child's Pony Hunters 2'0"/2'6" 299. Horse & Hound Pony Medal 2'0"/2'6" 215. Warm Up Hunters 2'0"/2'3"/2'6" 210. Pony Hunters (Conf.) 2'3"/2'6"/2'9" 211. Pony Hunters 2'3"/2'6"/2'9" 306. USEF Pony Medal 2'3"/2'6"/3'0" 535. Just for Fun Pony Jumpers 2'3" 202. Low Child/AA Hunters 2'6" 191. Jr/Am Handy Hunters 2'6" 311. SAHJA Mini Medal 2'6" 534. Just for Fun Jr/Am Jumpers 2'6" 370. English Pleasure- Mares 368. English Pleasure- Geldings 366. English Pleasure- Novice	HUNTER RING 2 - 8:00AM 205. Low Ch/AA 2'6" Warm-Up 2'6" 200. Low Child/AA Hunters 2'6" 201. Low Child/AA Hunters 2'6" 190. Jr/Am Handy Hunters 2'6" 345. Maiden Equitation 17&U 2'6" 353. Maiden Equitation 18&O 2'6" 193. Jr/Am Handy Hunters U/S 538. Just for Fun Jumpers Jr/Am 2'6" 221. Child's Pony Hunters 2'0"/2'6" 310. SAHJA Pony Medal 2'3" 223. Child's Pony Hunter U/S 320. Pony Equitation Flat 212. \$100 Pony Hunters 2'3"/2'6"/2'9" 293. NorCal Pony Medal 2'3"/2'6"/2'9" 213. Pony Hunters U/S 537. Just for Fun Pony Jumpers 2'3" 620. Mini Stirrup Hunters X-Rails 621. Mini Stirrup Hunters X-Rails 622. Mini Stirrup Hunters U/S 12. Warm-Up Hunters 2'0" 226. Short Stirrup Hunters 2'0" 227. Short-Stirrup Hunters 2'0" 242. Long-Stirrup Hunters 2'0" 243. Long-Stirrup Hunters 2'0" 228. Short-Stirrup Hunters U/S 244. Long-Stirrup Hunters U/S 536. Just for Fun Jumpers 2'0" 381. Walk Trot Equitation 383. Walk Trot Pleasure 328. Maiden Equitation Jr/Am Champ. Flat 331. Novice Equitation Jr/Am Champ. Flat 332. Limit Equitation 17&U Flat 333. Limit Equitation 18&O Flat 365. English Pleasure- Maiden Flat 367. English Pleasure- Novice Flat 371. English Pleasure- Ladies to Ride Flat 375. English Pls.- Gentlemen to Ride Flat 362. English Pleasure-Open Flat	HUNTER RING 2 - 8:00AM 354. Childs Pony 17 & U Flat 321. Pony Equitation Champ Flat 222. Child's Pony Hunters 2'0"/2'6" 340. Child's Pony Equitation 2'0"/2'6" 341/342. Pony Eq Champ 2'3"/2'6"/2'9" 541. Just for Fun Pony Jumpers 2'3" 204. Low Child/AA Hunters 2'6" 206. Low Ch/AA Hunters Warm-Up 2'6" 203. Low Child/AA Hunters 2'6" 192. Jr/Am Handy Hunters 2'6" 540. Just For Fun Jumpers Jr/Am 2'6" 624. Mini Stirrup Equitation/Fences 623. Mini Stirrup Flat Equitation 13. Warm-Up Equitation 2'0" 230. Short Stirrup Equitation 2'0" 246. Long Stirrup Equitation 2'0" 539. Just for Fun Jumpers 2'0" 229. Short Stirrup Equitation Flat 242. Long Stirrup Equitation Flat 382. Walk Trot Equitation 384. Walk Trot Pleasure 385. Walk Trot 8 & U Equitation 363. Walk Trot 8&U Pleasure 366. English Pleasure-18&O Flat 364. English Pleasure-17&U Flat 376. English Pleasure Open Champ.



**FEED & BEDDING
OFFICE HOURS**

8AM – 4PM
DAILY

**FACILITY
OFFICE**

(916) 682-1403

FACILITY FAX
(916) 688-7804

PRE-ORDER YOUR FEED AND BEDDING FOR THE SHOW

Mallard Creek Shavings, Alfalfa, Orchard Grass
Hay, Omelene, Pellets and More!

CALL: (916) 682-1403



SHELDON
FEED & SUPPLY
(916) 686-6400



A HUGE THANK YOU TO
BROOKSIDE EQUESTRIANS, INC
FOR MAKING THEIR WONDERFUL FACILITY
AVAILABLE FOR THE WINE COUNTRY CLASSIC



NORCAL HUNTER JUMPER ASSOCIATION 2022 MEMBERSHIP APPLICATION

PO BOX 243 . DAVIS, CA 95617

PO Box 243
Davis, CA
95617

MEMBER INFORMATION

- ☐ NEW
☐ RENEWAL

☐ ANNUAL \$50
☐ LIFE \$500

☐ JUNIOR
☐ AMATEUR
☐ PROFESSIONAL

NAME

ADDRESS

CITY

STATE

ZIP

E-MAIL

☐ I do not want NorCal to release my email address.

TELEPHONE

CELL PHONE

DOB: (REQUIRED)

TRAINER

- ☐ ANNUAL \$35
☐ LIFE \$100
☐ NAME CHANGE \$5
☐ TRANSFER OF
OWNERSHIP \$5

CHECK SIZE FOR PONY

- ☐ SMALL
☐ MEDIUM
☐ LARGE

HORSE 1

*HORSE NAME

USE#

FOR TRANSFER, PLEASE LIST FORMER OWNER'S NAME
*HORSE REGISTRATION MUST BE PAID BEFORE POINTS CAN ACCRUE.

- ☐ ANNUAL \$35
☐ LIFE \$100
☐ NAME CHANGE \$5
☐ TRANSFER OF
OWNERSHIP \$5

CHECK SIZE FOR PONY

- ☐ SMALL
☐ MEDIUM
☐ LARGE

HORSE 2

*HORSE NAME

USE#

FOR TRANSFER, PLEASE LIST FORMER OWNER'S NAME
*HORSE REGISTRATION MUST BE PAID BEFORE POINTS CAN ACCRUE.

PAY BY CREDIT CARD

NAME

CC#

EXP. DATE

CVC

BILLING ADDRESS

ZIP

You need it? Brookside's GOT IT!



Onsite Trailer & Golf Cart Reservations

**Please call ahead for availability
and reservations (916) 682-1403**

BROOKSIDE SHOW PARK FEED AND BEDDING

CALL AHEAD AND PLACE YOUR ORDER

FACILITY OFFICE (916) 682-1403



**SHELDON
FEED & SUPPLY**
(916) 686-6400
8928 GRANT LINE RD

RULES & GENERAL INFORMATION

1. EVERY CLASS OFFERED HEREIN WHICH IS COVERED BY THE RULES & SPECIFICATIONS OF THE CURRENT USEF RULE BOOK WILL BE CONDUCTED & JUDGED IN ACCORDANCE THEREWITH.

2. LIFE, SENIOR ACTIVE AND JUNIOR ACTIVE MEMBERS SHALL BE ELIGIBLE TO PARTICIPATE IN ALL CLASSES AT REGULAR COMPETITIONS, EVENTING COMPETITIONS AT THE PRELIMINARY LEVEL OR ABOVE AND COMBINED DRIVING COMPETITIONS AT THE ADVANCED LEVEL, DRESSAGE, REINING AND VAULTING COMPETITIONS AND ENDURANCE RIDES. A NONMEMBER MAY PARTICIPATE AS A HANDLER, RIDER, DRIVER, OWNER, LESSEE, AGENT, COACH OR TRAINER AT REGULAR COMPETITIONS, EVENTING COMPETITIONS, DRESSAGE COMPETITIONS, REINING COMPETITIONS AND COMBINED DRIVING COMPETITIONS UPON PAYMENT OF A \$45 SHOW PASS FEE. PARTICIPANTS IN THE FOLLOWING CLASSES ARE EXEMPTED FROM THE REQUIREMENTS OF THIS RULE: 1) LEADLINE; 2) EXHIBITIONS; 3) GAMES AND RACES; 4) CLASSES FOR 4-H MEMBERS; 5) WALK TROT (EXCEPTION: FRIESIAN PERFORMANCE FR222) AND ACADEMY CLASSES (ACADEMY CLASSES ARE CLASSES LIMITED TO HORSES USED REGULARLY IN A LESSON PROGRAM); 6) USDF INTRODUCTORY LEVEL TESTS, PAS DE DEUX AND QUADRILLE CLASSES; 7) NRHA ENDORSED REINING COMPETITIONS. 8) OPPORTUNITY CLASSES, 9) CITIZENS OF OTHER NATIONS WHO HAVE PROOF, IN ENGLISH, OF CURRENT MEMBERSHIP IN GOOD STANDING OF THEIR OWN NATIONAL FEDERATION, 10) USEA BEGINNER NOVICE DIVISION; AND 11) ASSISTANT HANDLERS IN DRESSAGE SPORT HORSE BREEDING CLASSES.

3. **ENTRY PROCEDURE:** Care should be taken to enter each horse in it's proper division or class. Exhibitors are responsible for their errors and those of their agents in completing entry blanks. In all cases the description on the entry blank must fully identify the horse. The word "entry" shall not be accepted. Stipulations for entry blank: 1. Be properly signed and in the case of a minor, be signed by a parent or guardian. 2. Be made on an entry blank provided by the show. 3. Show the correct mailing address of the owner. 4. Social Security number must be on the entry blank. 5. Include copy of USEF membership card or pay \$45 Show Pass Fee for each owner, lessee, agent, trainer, and rider. 7. Include copy of USHJA membership card or \$30 Show Pass Fee for each owner, lessee, agent, trainer and rider. 8. Include PCHA membership numbers for each owner, lessee, agent, trainer, and rider. 9. Include all additional membership numbers and birth dates of jr. and amateur riders. Please attach photocopies of USEF Amateur cards, USEF pony measurement cards, or USEF Jr. Hunter cards as applicable for entries. 10. Include USEF Horse Recording number for horses in Jumper classes requiring number. 11. For each horse entered send a \$275 per stall/tack room requested. Send with your completed entry blank on or before the closing date. If entries are post-marked not later than the closing date and are properly filled out no late fee will be charged

The Committee reserves to itself the right of declining to accept any entry, and to return any entrance fees before the opening of the Show at any time, regardless if the individual or horse has already participated, without being liable for compensation. The Committee reserves to itself the power to prohibit any person attending or showing a horse and to remove any individual or horse from the Show without being liable for compensation. Exhibitors with any past behavior of issuing a check that has been rejected by the bank for any reason will be required to make payment in cash, cashier's check or other form of prepayment agreed to by management.

4. **LATE ENTRIES:** Entries postmarked after the closing date of August 5, 2022 will be assessed a \$25 late fee. **This deadline will be strictly enforced.** The post office official date of cancellation will be the only evidence allowable for charging late fees. No hand canceled or metered mail marking will be accepted. **No Exceptions. Entries will not be accepted by facsimile or E mail.** If there is a local delay specific to your city or county, please plan to mail your entries early to avoid a late fee. Post entries will be accepted with a processing fee of \$5.00 per class.

5. **POST ENTRIES:** Entries made or classes added at the show will be considered "Post Entries". **Post entries may be limited or not accepted based on show schedule.** It is to your distinct advantage to enter all the classes that you expect to ride in on your original entry. Substitutions & class changes will be treated as post entries

6. **REFUNDS:** Before the closing date of entries full refunds will be given. After the closing date, with a Veterinarian's or doctor's certificate, full refunds will be given less a \$50 office charge, and less fees for classes held prior to notification at the Horse Show Office, whether exhibited in or not.

During the show, only the show Veterinarian's report will be accepted. Stall deposits will be refunded if canceled by August 5, 2022.

7. ADD / SCRATCHED CLASSES: Adds & Scratches are included with the reservation fee. All Adds & Scratches need to be done in the office prior to the class starting. Classes must be scratched prior to the beginning of the class entered. It is the exhibitor's responsibility to notify the office. Adding a class at the back gate does not relieve you from completing the paperwork in the office.

8. CONDITION OF ENTRY: Every horse entered for competition will be under the control of the Horse Show Management, but management will, in no case, be responsible for any loss or damage that may occur, and it shall be a condition of entry that each exhibitor shall hold the Horse Show, its directors and employees, MDC Corporation, and Brookside Equestrians, Inc harmless for any loss or accident to his horse(s) or equipment which may occur from sickness, fire or otherwise.

9. MINOR EXHIBITORS: Parent(s) or guardian(s) of minor exhibitors shall hold Horse Show Management and the Facility harmless for any injury to such minor. No child's entry will be accepted or number issued unless the entry is signed by a parent or LEGAL guardian.

10. PRIZES: Awards to 1st place in all classes, 1st - 8th to Open, Jr, Am, and Pony Hunters. 1st - 6th in all other classes. In all money classes prize money will be paid through 5th place with

the money split 30%, 25%, 20%, 15%, 10%, unless stated otherwise. Prize money will be made payable to the owner listed on the entry blank and mailed within 30 days. NO PRIZE MONEY WILL BE PAID UNLESS THE OWNER'S SOCIAL SECURITY NUMBER IS LISTED ON THE ENTRY BLANK. NO PRIZE MONEY WILL BE PAID IF THERE IS INDEBTEDNESS OUTSTANDING. CHECKS MUST BE CASHED WITHIN 60 DAYS. In all classes with add-back, prize money is computed from the number of horses that actually show.

11. MANAGEMENT: The Horse Show Management reserves the right to interpret all questions & conditions in regard to or arising out of or incident to the show without claims for damages or recourse of any kind. All questions not covered in these rules & regulations shall be decided by Horse Show Management, their decision to be final. The Horse Show Management reserves to itself the right to refuse, accept conditionally, or to cancel any entries, disqualify rider or exhibitors, prohibit exhibition of entries and cancel awards and prizes, without claim for damages; to cancel or combine any unfilled classes; to change rings or rotate judges; to change specifications in jumper classes in order to facilitate the time schedule. Management reserves the right to limit entries at its discretion.

12. STABLING: Stalls and tack rooms will be available for \$275 each. No bedding included. Stalls are of portable construction, 12' x 12' with top and bottom doors. A stall charge will be collected if stalls are used for any purpose ie: feed, camping, braiding, etc. Stable flooring is dirt. Stalls will not be available prior to 8:00 AM, Tuesday August 16th, unless specific arrangements are made with show management.

13. GROUNDS FEE: All horses entering the show and not using a stall will pay a \$50 per day haul in fee, used to offset facility costs, clean-up, and amenities.

14. FEED & BEDDING: Before the show, feed may be ordered directly from Brookside Equestrians, Inc. (916) 682-1403

15. RV PARKING: Please See RV Order form. Parking in RV lot ONLY. Before the show, RV reservations may be ordered directly from Brookside Equestrians Inc. (916) 682-1403

16. RETURNED CHECKS: Checks returned by the bank for any reason are regarded as a most serious offense and will be handled as follows: **ALL RETURNED CHECKS WILL BE CHARGED AN ADDITIONAL 10% PENALTY (\$50 MINIMUM).** Accounts will be given 10 days to be paid in full with cash or money order, or they will be turned in to the sanctioning organizations for further disciplinary action. If further action is needed, additional penalties will be incurred with a minimum of an additional \$50 or an additional 10%. Any exhibitor leaving the show with an unpaid balance of entry fees will be billed for these charges and a \$50 billing fee will be added to the total due.

Exhibitors with any past behavior of issuing a check that has been rejected by the bank for any reason will be required to make payment in cash, cashier's check or other form of prepayment agreed to by management.

17. UNSPORTSMANLIKE BEHAVIOR WILL NOT BE TOLERATED AND MANAGEMENT RESERVES THE RIGHT TO FILE CHARGES AND HOLD A SHOW COMMITTEE HEARING WHICH MAY RESULT IN FORFEITURE OF ALL ENTRIES, PRIZE MONEY AND RIBBONS.

18. SCHOOLING: Schooling will be allowed in all arenas on Wednesday at approximately 10:00am. and at the end of each show day with time permitting.

19. RINGS AND FOOTING: Arena 1 250x150', Sand Footing; Arena 2 290x150' - Sand Footing; Lower Arena 240x130' - Sand Footing; Grand Prix Arena 220x265' - Sand Footing

20. MOTORIZED VEHICLES: In accordance with GR1301.7: Minors who do not have a valid driver's license which allows them to operate a motorized vehicle in the state in which they reside will not be permitted to operate a motorized vehicle of any kind, including, but not limited to, golf carts, motorcycles, scooters, or farm utility vehicles, on the competition grounds of licensed competitions. Minors who have a valid temporary license may operate the above described motorized vehicles as long as they are accompanied by an adult with a valid driver's license. The parent/legal guardian or individual who signs the entry blank as a parent or guardian of a minor operating a motorized vehicle in violation of this rule are solely responsible for any damages, claims, losses or actions resulting from that operation. Violations of this rule will be cause for penalties against those responsible for the child committing the offense. Wheelchairs and other mobility assistance devices for individuals with disabilities are exempt from this rule.

The unsafe use of personal electronic transport devices, as determined by the competition officials and management in their sole discretion, that do not require a driver's license to operate, including but not limited to segways, hover boards, and single wheeled scooters is prohibited on competition grounds. Operating such devices in areas where people gather may be deemed "unsafe use" if there is a risk of harm to others. If the operator of the device is a minor, the parent/legal guardian or individual who signs the entry blank as a parent or guardian of a minor operating the device in violation of this rule is accountable and may be subject to penalties. Wheelchairs and other mobility assistance devices for individuals with disabilities are exempt from this rule.

21. NON-SHOWING HORSES: For any horse on the grounds and not officially entered, owner or trainer of said horse must complete a "Not to Show" form, sign a release at the Horse Show Office, and pay a \$50 fee

22. PROTECTIVE HEADGEAR AND ATTIRE: USEF Article GR318 will be strictly enforced. All riders in hunter, hunter seat Equitation and Jumper Classes where jumping is required and while jumping on competition grounds must wear ASTM/SEI approved helmets. All exhibitors are required to wear shoes or boots with a riding heel whenever mounted on horseback on the grounds.

23. MEDICAL WASTE: Sharps must be placed in the proper receptacles. Anyone found in violation shall be subject to a fine or other penalties deemed necessary by show management.

24. SAFE SPORT STATEMENT: Add a Safe Sport section to rules page: All USEF Life and Senior Active members, as well as participants who have regular contact with minor athletes, are required to comply with the U.S. Center for SafeSport training requirement to be eligible to participate in the competition. All participants must adhere to the U.S. Center for SafeSport Code, USEF Safe Sport Policy, and the Minor Athlete Abuse Prevention Policies. More information about these can be found at www.usef.org.

25. Nearest Hospital/Trauma Center: Kaiser South, 6600 Bruceville Road, Sac 95823 (11.8 miles from Brookside).

26. USHJA REGISTRATION FEE: All horses competing in Federation non-breed restricted licensed competitions with hunter, hunter breeding, jumper and hunter seat equitation classes (except those activities enumerated in GR901.9) must be properly identified and must obtain a Registration Number from USHJA. Applications for Registration Numbers can be completed online at www.ushja.org or www.usef.org using the Horse Registration application form. The Horse application form is also available from the USHJA or Federation office, or it can be downloaded from the USHJA or Federation website or from competition management.

MAIL ENTRIES TO:

Brookside Wine Country Classic, 11120 Bradley Ranch Rd., Elk Grove, CA 95624

ENTRIES CLOSE: August 5, 2022



Enter online at www.horshowtime.com



WAIVER AND RELEASE OF LIABILITY, ASSUMPTION OF RISK AND INDEMNITY AGREEMENT

For and in consideration of United States Equestrian Federation, Inc. dba US Equestrian ("USEF") allowing me, the undersigned, to participate in any capacity (including as a rider, driver, handler, vaulter, longeur, lessee, owner, agent, coach, official, trainer or volunteer) in a USEF sanctioned, licensed or approved event or activity, including but not limited to equestrian clinics, practices, shows, competitions and related or incidental activities and ("USEF Event" or "USEF Events"); I, for myself, and on behalf of my spouse, children, heirs and next of kin, and any legal and personal representatives, executors, administrators, successors,, and assigns, hereby agree to and make the following contractual representations pursuant to this Agreement (the "Agreement"):

A. RULES AND REGULATIONS: I hereby agree that I have read, understand, and agree to be bound by all applicable Federation Bylaws, rules, and policies including the USEF Safe Sport Policy and Minor Athlete Abuse Prevention Policies (MAAPP) as published at www.usef.org, as amended from time to time.

B. ACKNOWLEDGMENT OF RISK: I knowingly, willingly, and voluntarily acknowledge the inherent risks associated with the sport of equestrian and know that horseback riding and related equestrian activities are inherently dangerous, and that participation in any USEF Event involves risks and dangers including, without limitation, the potential for serious bodily injury (including broken bones, head or neck injuries), sickness and disease (including communicable diseases), trauma, pain & suffering, permanent disability, paralysis and death; loss of or damage to personal property (including my mount & equipment) arising out of the unpredictable behavior of horses; exposure to extreme conditions and circumstances; accidents involving other participants, event staff, volunteers or spectators; contact or collision with other participants and horses, natural or manmade objects; adverse weather conditions; facilities issues and premises conditions; failure of protective equipment (including helmets); inadequate safety measures; participants of varying skill levels; situations beyond the immediate control of the USEF Event organizers and competition management; and other undefined, not readily foreseeable and presently unknown risks and dangers ("Risks").

EQUINE ACTIVITY LIABILITY ACT WARNING:

CAUTION: HORSEBACK RIDING AND EQUINE ACTIVITIES CAN BE DANGEROUS. RIDE AT YOUR OWN RISK.

Under the laws of most States, an equine activity sponsor or equine professional is not liable for any injury to, or the death of, a participant in equine activities resulting from the inherent risks of equine activities.

C. ASSUMPTION OF RISK: I understand that the aforementioned Risks may be caused in whole or in part or result directly or indirectly from the negligence of my own actions or inactions, the actions or inactions of others participating in the USEF Events, or the negligent acts or omissions of the Released Parties defined below, and I hereby voluntarily and knowingly assume all such Risks and responsibility for any damages, liabilities, losses, or expenses that I incur as a result of my participation in any USEF Events. I also agree to be responsible for any injury or damage caused by me, my horse, my employees or contractors under my direction and control at any USEF Event.

D. WAIVER AND RELEASE OF LIABILITY, HOLD HARMLESS AND INDEMNITY: In conjunction with my participation in any USEF Event, I hereby release, waive and covenant not to sue, and further agree to indemnify, defend and hold harmless the following parties: USEF, USEF Recognized Affiliate Associations, the United States Olympic & Paralympic Committee (USOPC), USEF clubs, members, Event participants (including athletes/riders, coaches, trainers, judges/officials, and other personnel), the Event owner, licensee, and competition managers; the promoters, sponsors, or advertisers of any USEF Event; any charity or other beneficiary which may benefit from the USEF Event; the owners, managers, or lessors of any facilities or premises where a USEF Event may be held; and all directors, officers, employees, agents, contractors, and volunteers of any of the aforementioned parties (**Individually and Collectively, the "Released Parties" or "Event Organizers"**), with respect to any liability, claim(s), demand(s), cause(s) of action, damage(s), loss, or expense (including court costs and reasonable attorney fees) of any kind or nature ("**Liability**") which may arise out of, result from, or relate in any way to my participation in the USEF Events, including claims for Liability caused in whole or in part by the negligent acts or omissions of the Released Parties.

E. COMPLETE AGREEMENT AND SEVERABILITY CLAUSE: This Agreement represents the complete understanding between the parties regarding these issues and no oral representations, statements or inducements have been made apart from this Agreement. If any provision of this Agreement is held to be unlawful, void, or for any reason unenforceable, then that provision shall be deemed severable from this Agreement and shall not affect the validity and enforceability of any remaining provisions.

I HAVE CAREFULLY READ THIS DOCUMENT IN ITS ENTIRETY, UNDERSTAND ALL OF ITS TERMS AND CONDITIONS, AND KNOW IT CONTAINS AN ASSUMPTION OF RISK, RELEASE AND WAIVER FROM LIABILITY, AS WELL AS A HOLD HARMLESS AND INDEMNIFICATION OBLIGATIONS.

By signing below, I (as the participant or as the Parent/Legal Guardian of the minor identified below) hereby accept and agree to the terms and conditions of this Agreement in connection with my (or the minor's) participation in any USEF Event. If, despite this Agreement, I, or anyone on my behalf or the minor's behalf, makes a claim for Liability against any of the Released Parties, I will indemnify, defend and hold harmless each of the Released Parties from any such Liabilities as the result of such claim.

The parties agree that this agreement may be electronically signed. The parties agree that the electronic signatures appearing on this agreement are the same as handwritten signatures for the purposes of validity, enforceability, and admissibility.

☐ RIDER/DRIVER/HANDLER/VAULTER/LONGEUR ☐ OWNER ☐ TRAINER ☐ OFFICIAL ☐ STAFF ☐ VOLUNTEER ☐ COACH (IF APPLICABLE)

Signature: _____ Date: _____

Print Name: _____

Parent/Guardian Signature: (Required if Rider/Driver/Handler/Vaulter/Longeur is a minor) _____ Date: _____

Print Parent//Guardian Name: _____ Emergency Contact Phone No. _____

USEF Competition Name Wine Country Classic Horse Show

USEF# 6717

Competition Division(s) and Rating(s) A/O Green, Jr. Hunter, Performance Hunters
(Regional I) Adult Amateur, Children's (C)



— REQUIRED OF ALL PARTICIPANTS —

LEARN ABOUT MAAP POLICIES

Read about these and more at usef.org/MAAPP



SafeSport Training



One-On-One Interactions



Local Travel



Social Media and
Electronic Communications

REPORT VIOLATIONS



usef.org/safe-sport/reporting
859-225-6915





Pacific Coast Horse Shows Association
P.O. Box 5570, Glendale, CA 91221
(818)842-8194
pcha@pchorseshows.org

Membership Application

___ NEW ___ RENEWAL

___ SENIOR: \$75.00 ___ JUNIOR: \$55.00 ___ LIFE: \$1,000.00

___ SENIOR FOR 3 YEARS: \$200.00 ___ JUNIOR FOR 3 YEARS: \$150.00

*no increase if a junior becomes a senior during 3 year plan

CHECK ALL THAT APPLY: ___ PROFESSIONAL ___ AMATEUR ___ HUNTER/JUMPER ___ WESTERN
___ STEWARD ___ SHOW MANAGER ___ SHOW CONTACT

NAME _____

DATE OF BIRTH REQUIRED _____

ADDRESS _____

CITY/STATE _____ ZIP _____

TELEPHONE _____ E-MAIL _____

NAME OF TRAINER(MUST BE A MEMBER) _____

CREDIT CARD _____ CHECK# _____

EXPIRATION DATE _____ SECURITY CODE _____

NAME ON CARD _____

BILLING ADDRESS _____

RIDER, HORSE, OWNER AND TRAINER MUST ALL BE MEMBERS TO COMPETE FOR POINTS



Pacific Coast Horse Shows Association
P.O. Box 5570, Glendale, CA 91221
(818)842-8194
pcha@pchorseshows.org

HORSE REGISTRATION

Horse must be member to compete for year end points

___ HUNTER/JUMPER ___ WESTERN

___ YEARLY REGISTRATION: \$40.00 ___ LIFETIME REGISTRATION: \$100.00

SHOW NAME OF HORSE _____

COLOR _____ SEX _____ HT _____ YR. FOALED _____ BREED _____

OWNER OF HORSE(MUST BE A MEMBER) _____

___ SHOW NAME CHANGE:\$10.00

FORMER NAME _____

___ TRANSFER OF OWNERSHIP: \$10.00

FORMER OWNER _____



CHAMPIONSHIPS

USHJA 2'9" Hunters	.85m Jumpers
3'3 Performance Hunters	.90m Jumpers
3'6 Performance Hunters	.95m Jumpers
3'0 Green Hunters	1.00m Jumpers
3'3 Green Hunters	1.05m Jumpers
3'6 Green Hunters	1.10m Jumpers
3'9 Green Hunters	1.15m Jumpers
Pony Working Hunters	1.25m Jumpers
Children's Pony Hunters	Children's Jumpers
Children's Hunters 17 & Under	Adult Amateur Jumpers
Jr/AO Working Hunters	Modified Child/AA Jumpers
Adult Amateur Hunters 18 & O	Junior-A/O Jumpers
Modified Jr/Am Hunters	Modified Jr/Am Jumpers
Handy Hunters 2'6	Pony Equitation
Short Stirrup Hunters 17 & Under	Junior Equitation
Long Stirrup Hunters	Maiden Equitation
Low Jumpers	Novice Equitation
.75m Jumpers	A/A Equitation 18 – O
.80m Jumpers	



The Mike Murphy Sportsmanship Award

THE WINE COUNTRY CLASSIC SPONSORS THIS ANNUAL TROPHY EACH YEAR TO A TRAINER OR EXHIBITOR WHOSE ATTITUDE, DEMEANOR AND ACTIONS BEST DEMONSTRATE THE SPIRIT OF SPORTSMANSHIP. THE CHARACTERISTICS OF SPORTSMANSHIP ARE OFTEN OVERLOOKED, BUT THEY CAN BE EASILY VIEWED BY TAKING A MOMENT TO NOTICE THE NAMESAKE OF THIS AWARD:

MIKE MURPHY

THE WINE COUNTRY CLASSIC
-HOST HOTEL-



HYATT PLACE™

Sacramento/Rancho Cordova

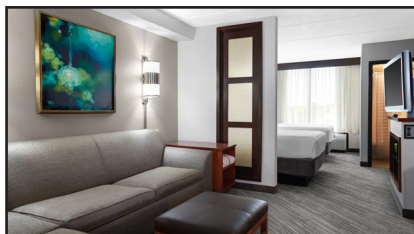
Free Wi-Fi

Shuttle

Outdoor Pool

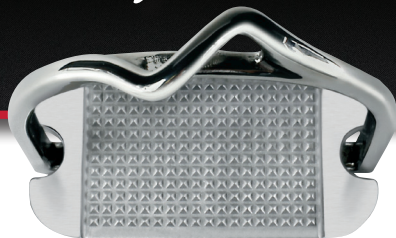
Fitness Center

On-Site Dining



**10744 Gold Center Drive
Rancho Cordova, CA 95670
916-635-4799**

Now you see it,



Now you don't!



MDC 'S' STIRRUPS™

45° Patented Positioning Technology

**Classic Styling *with Invisible*
Show Ring Advantages**



Forward Facing Stirrups For Forward Thinking Riders

Proven Pain Relief



***100% Satisfaction Guarantee
or Your Money Back***

Performance · Position

Traction · Comfort · Safety

www.mdcstirrups.com

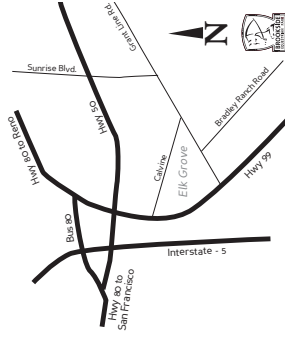
**Try any of our nine models
for free at the show!**

Come to the Horse Show office for details

Call MDC direct for your personal stirrup consultation 831-393-0588 / info@mdcstirrups.com



Directions to Brookside Equestrian Park



From HWY 99:

Take the Grant Line Rd. exit. Head **EAST** on Grant Line for 6.1 Miles.
Turn **RIGHT** on Bradley Ranch Road.
Brookside is at the end of the road.

From HWY 50

Take the Sunrise Blvd. exit. Head **SOUTH** on Sunrise for approx. 15 minutes.
Turn **RIGHT** on Grant Line and travel approx. 3.5 miles.
Turn **LEFT** on Bradley Ranch Road. Brookside is at the end of the road.

Close of Entries August 5, 2022

Enter online at www.HorseShowTime.com